

FURNITURE PRODUCTION
INTERIOR
CABIN DESIGN



www.jeonghwa21.com

STA-JH

Marine Furniture





JEONGHWA

Accommodation system

Honesty

The honesty is valued because there are many things which are not honest. It is the most valuable property that we can always trust and be trusted. The spirit of Jeonghwa is to make the honest company.

Harmony

Harmony means that people live getting jointed together. when an employee has an ownership that he/she is the owner of company and all people become united. true and enormous power is made in Jeonghwa. The power will be shown. Jeonghwa is making this harmonizing company.

The world has been dramatically changed for last 30 years. But, there is a thing that does not change. Jeonghwa has not been changed and kept the only way for last 30 years based on its establishment philosophy that will achieve to be honest and harmonized company. Jeonghwa has been kept one way for interior works for ship. Jeonghwa can respond customer request at any time as it has technical ability accumulated for 30 years and good human resources. Jeonghwa does not satisfy this time and will continue making its best effort until customer satisfy.

C.E.O Son, Young-su.



1st FACTORY
A WHOLE VIEW

CONTENTS

- P02.** C.E.O MESSAGE
- P04.** INTRODUCTION OF JEONGHWA
- P06.** BUSINESS DIVISION
- P08.** INTRODUCTION OF PRODUCT PROCESS
- P10.** ROOM & FURNITURE INFORMATION
- P14.** PROJECT INFORMATION

INTRODUCTION OF JEONGHWA

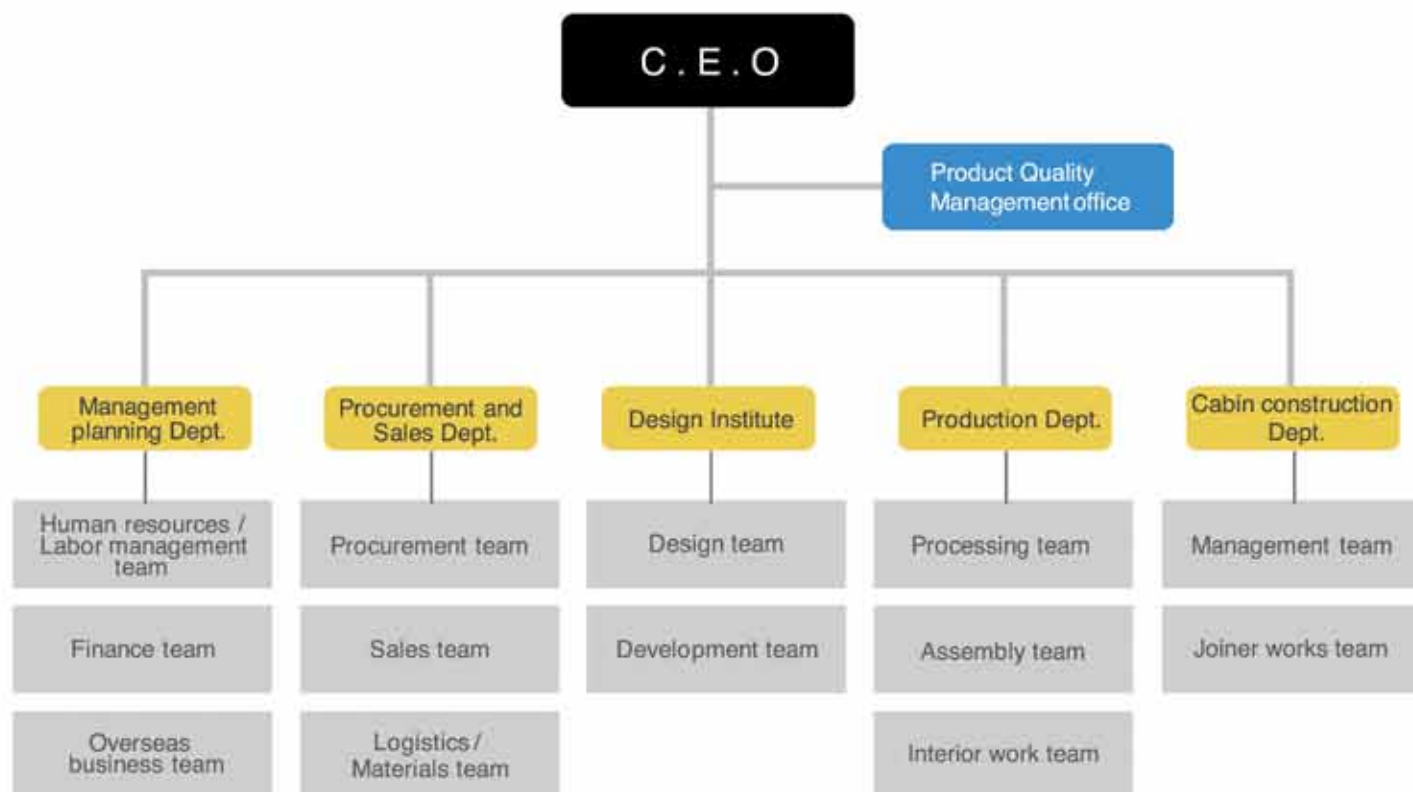
History

- | | | |
|-------|-----|--|
| 2010 | 12. | Korea patent No. 10-1000084 |
| | 09. | DNV(ISO 9001:2008, KS Q 9001:2009) Certification Renewal |
| | 09. | Environment, Safety and Health Integrated Management System Certification
(KOSHA 18001 & OHSAS 18001 & DNV ISO 14001:2004, KS ISO 14001:2009) |
| 2009. | 11. | Corporate R & D (Design) established |
| | 10. | KORMARINE Exhibition |
| | 02. | Selected as excellent cooperator company of STX Group in 2008 |
| | 01. | Designated INNO-BIZ Company by Small & Medium Business Administration |
| 2008. | 05. | Acquired ISO9001:2000 certification from DNV |
| 2007. | 12. | Established Dalian Jeonghwa Accommodation System Co., Ltd. in China |
| 2006. | 05. | Participated in advanced restructuring project of the Small Business Corporation |
| | | Moved 2nd factory in the Noksan National Industrial Complex |
| | 02. | Selected as a excellent cooperator company of STX Group in 2005 |
| 2005. | 07. | Enlarged 1st factory and its furniture exhibition hall |
| | 01. | Selected as quality management company of the Future Management Technology Institution |
| 2004. | 09. | Participated in small and medium business IT support project (ERP construction) |
| | 06. | Renewal of ISO 9001:2000 certification (including design) |
| 2002. | 06. | Acquired ISO 9002 certification from HSB-RS |
| | 04. | Moved head office and 1st factory to the Noksan National industrial Complex |
| 2001. | 07. | Moved Youngdo head office and manufacturing factory to Jangrim |
| | 01. | Registered as the cooperator company of STX Shipbuilding Co., Ltd. |
| 1998. | 08. | Registered as cooperator company of GumSung Marine Products. Co., Ltd. |
| 1997. | 05. | Conversion into incorporated Jeonghwa Accommodation System Co., Ltd. |
| 1991. | 10. | Registered as cooperator company for train design work of Hanjin Heavy Industries and Construction Co., Ltd. |
| 1983. | 04. | Registered as cooperator company of Daedong Shipbuilding Co., Ltd. |
| | | Registered as cooperator company of Sajo Industries and Sajo CS. |
| 1981. | 08. | Established Jeonghwa Co. |



■ A WHOLE VIEW - 1st FACTORY

Organization



BUSINESS DIVISION

R & D (Research & Development)



Jeonghwa is making its great endeavor to meet customer's needs with the best quality and design in continuously growing wooden furniture market for ship. According to order-based production, Jeonghwa carries out its R&D process to provide standardized furnitures and to meet all customer's needs with open mind. Based on deep understanding on normal furnitures and color as well as R&D process, it carries out research on new design and materials. Also, Jeonghwa is recently heading to high-class furnitures and interior area aiming cruise market

in NOKSAN factory

Manufacturing (Processing & Assembly)



Wooden furniture for ship is manufactured by order-based with many item types and to be solid and strong against weather change which are different from mass produced normal furnitures. Therefore Jeonghwa uses the strictly selected quality materials and manufactures wooden furniture and various inventories installed in cabins. Jeonghwa is ready to satisfy various customer's needs in style, color and quality perspective by thirty employees in about 5,000m of large factory

Construction

(Accommodation Joiner Work)



The cabin is to be place where crews can live comfortably and conveniently.

Based on accommodation interior work experiences for 200 ships in STX shipbuilding Co., Ltd. It carries out various processes such as joiner working, panelling, furniture installation, fianl, etc by skilled human resource to create customer satisfaction

in JINHAE / YOUNGDO

Repair for ship

(Remodeling, Insulation Works)



Based on thirty years exprience in wooden working area such as cabin and deck outfitting work for various fishing boats and merchant ships. remodeling work, insulation work, fish tank work, and deck work, Jeonghwa has been kept long partnership with famous marine products company and carries out its construction to ensure quality and due delivery by professional woodworkers.

INTRODUCTION OF PRODUCT PROCESS

01



WARSM - 3000
5040(L) X 5475(W) X 1800(H)

02



WARBM - 1330 2P
3500(L) X 4600(W) X 2300(H)

WNCR - MT1825
3800(L) X 5100(W) X 3124(H)

03



HD - 4040S
7000(L) X 1000(W) X 1500(H)

KDP - 5000
7500(L) X 1300(W) X 1500(H)

04



TL - 93/3
2800(L) X 1600(W) X 1500(H)

**CNC
RUNNING
SAW**
재단공정

**POINT
BORING
MACHINE**
가공공정

**CNC
ROUTER
MACHINE**
가공공정

**EDGE
BANDER**
엣지접착
공정

**MULTI
BORING
MACHINE**
홀 가공
공정

2st FACTORY
Processing

ASSEMBLY
조립공정

PACKING & DELIVERY
포장 및 배송



05



06

1st FACTORY
Assembly

CERTIFICATION



FURNITURE INFORMATION

1. HIGH PERFORMANCE

Jeonghwa's Furniture, which uses high-quality raw materials and H.P.M (High Pressure Melamine sheet) excellent in the durability of the surface, is scratch and wear-resistant furniture.

CAPTAIN'S DAY ROOM
The Whole View



CONCEPT : WARM AND COMFORTABLE FEELING

CAPTAIN'S DAY ROOM FURNITURE
3D IMAGE

L-DESK
L-TEA TABLE
L-BOOKCASE SET
L-SIDEBOARD SET



L-DESK

COLOR : CHERRY
SIZE : 2400 X 950 X 770



L-TEA TABLE

COLOR : CHERRY
SIZE : 1200 X 650 X 650



L-BOOKCASE SET

COLOR : CHERRY
SIZE : 2840 X 450 X 2050



L-SIDEBOARD SET

COLOR : CHERRY
SIZE : 4100 X 600 X 2060

FURNITURE INFORMATION

2. HIGH-QUALITY

Jeonghwa's Furniture, which never uses air nailguns but uses screws, is hardly transformed and destroyed despite of the long time use of it, and produces stronger furniture through its unique design even for the invisible spaces.



CONCEPT : RELAXED AND COMFORTABLE FEELING

CAPTAIN'S BED ROOM FURNITURE 3D IMAGE

L-SINGLE BED
L-WARDROBE
L-CHEST OF DRAWERS
L-SAFE BOX



L-SINGLE BED

COLOR : CHERRY
SIZE : 2000 X 1400 X 650



L-WARDROBE

COLOR : CHERRY
SIZE : 1000 X 600 X 2050



L-CHEST OF DRAWERS

COLOR : CHERRY
SIZE : 1000 X 600 X 650



L-SAFE BOX

COLOR : CHERRY
SIZE : 780 X 650 X 770

FURNITURE INFORMATION

3. VARIOUS COLOR

Jeonghwa's Furniture is custom-built furniture, to which every color is applicable, and is trying hard to satisfy its customers by finding most proper colors for their demands.

OFFICER'S SMOKING ROOM
The Whole View



CONCEPT : DESIGN FOCUSED ON LINEAL BEAUTY

OFFICERS' SMOKING ROOM FURNITURE
3D IMAGE

L-TEA TABLE
L-SIDEBOARD SET
L-BAR TABLE
L-WINE RACK SET



L-TEA TABLE

COLOR : WALNUT
SIZE : 1400 X 750 X 530



L-SIDEBOARD SET

COLOR : WALNUT
SIZE : 3900 X (600+450) X 2050



L-BAR TABLE

COLOR : WALNUT
SIZE : (2750+2050) X 500 X 2050



L-WINE RACK SET

COLOR : WALNUT
SIZE : 2750 X (700+600) X 2050

FURNITURE INFORMATION

4. MODERN APPEARANCE

Jeonghwa's Furniture has modern flair with practical value.
Come experience comfort and convenience with it.

CAPTAIN'S MESS ROOM
The Whole View



CONCEPT : DESIGN FOCUSED ON SOFTNESS

CAPTAIN'S MESS ROOM FURNITURE
3D IMAGE

L-MESS TABLE (ROUND)
L-MESS TABLE (SQUARE)
L-SIDEBORD SET
L-SIDEBORD & ART WALL



L-MESS TABLE

COLOR : MAPLE
SIZE : 1650 X 720



L-MESS TABLE

COLOR : MAPLE
SIZE : 3000 X 800 X 720



L-SIDEBORD SET

COLOR : MAPLE
SIZE : 4100 X (700+450) X 2050



L-SIDEBORD & ART WALL

COLOR : MAPLE
SIZE : 2900 X 450 X 900

PROJECT INFORMATION

PROJECT NAME : UNIT CABIN FOR CREW CLASS

CONCEPT : It maximizes the effective use of additional spaces by equalizing the depth of furniture. Using white as the main color instead of wooden color, it has a bright and contemporary feel. It is made more ergonomically appealing and practical for user's maximum convenience. Various and individualized designs which are examined and adjusted by 3D image rendering are applicable.

VIEW 1



Simple



VIEW 2



Modern



VIEW 3



Function



VIEW 4



Combination



PROJECT INFORMATION

PROJECT NAME : SB Yacht hotel mock-up project
COLOR : Zebra (Artificial Veneer)



PROJECT NAME : DESIGN UPGRADE PROJECT (MOCK-UP)
CONCEPT : Throwing away the standardized and flat designs of ship furniture and the formal arrangements of home offices, it creates more relaxed and comfortable atmosphere.



VIEW



ADDRESS

STA-JH Accommodation System Co., Ltd. 1660-15 Songjeong-dong,
Gangseo-gu, Busan, 618-819, Korea

TELEPHONE

051.831.1274 / +82.51.831.1274

FACSIMILE

051.831.1275 / +82.51.831.1275